



WE APPLAUD SAFE EMPLOYERS

94th Annual Governor's Occupational Safety & Health Awards



Join us for the 94th Annual Governor's Occupational Safety and Health Awards Program as we honor the success of employers and workers who together are creating safer and healthier places to work.



WHY PARTICIPATE?

- To promote a workplace culture of safety and health excellence and continuous self-improvement.
- To recognize individual worksites that have achieved and maintained notable success in preventing workplace injuries and illnesses.
- To publicly show current and potential employees that worker health and safety is a priority.
- To support employees and management in their continued efforts to maintain safe work environments.



Since 1927, the Governor's Occupational Safety and Health Awards Program has played an important role in promoting safer and healthier workplaces in New Jersey. The program, currently sponsored through an Alliance between the New Jersey Department of Labor and Workforce Development, United States Department of Labor Occupational Safety and Health Administration, and the New Jersey State Industrial Safety Committee, is open to places of employment, both public and private.



Award Certificates & Eligibility

The awards listed here are based on the calendar year January 1 to December 31, 2022.



NEW JERSEY GOVERNOR'S AWARD FOR SAFETY AND HEALTH EXCELLENCE:

Provides recognition to New Jersey establishments who demonstrate the highest level of safety and health performance by participating in voluntary safety and health achievement programs, demonstrating a comprehensive safety and health culture, and striving for continuous improvement.

To be eligible, all the following qualifications must be met:

1. Be a current OSHA VPP, NJDOL SHARP Award recipient, or be certified to meet the requirement of ISO 45001.
2. Have injury and illness rates less than half the latest published BLS rates for their industry NAICS code.
3. Have a Workers' Compensation Experience Modification Rate that is 0.8 or lower.
4. Complete the application demonstrating safety and health program implementation based on leading performance indicators in accordance with OSHA guidelines.



NEW JERSEY GOVERNOR'S AWARD FOR SAFETY AND HEALTH PERFORMANCE:

Provides recognition to establishments who have demonstrated a strong commitment to improving their safety and health programs by utilizing the NJDOL OSHA On-Site Consultation Program, or PEOSH Consultation Program, and who have established robust safety and health program management systems evidenced by low injury and illness rates.

To be eligible, all the following qualifications must be met:

1. The establishment must have requested and received full-service safety and health consultation visits from NJDOL OSHA On-Site Consultation or PEOSH Consultation during the period from January 1, 2022 through July 15, 2023.
2. All serious and other-than-serious safety and health hazards that were identified during the consultations must have been corrected.
3. Have injury and illness rates less than half the latest published BLS rates for their industry NAICS code.
4. Complete the application demonstrating safety and health program implementation based on leading performance indicators in accordance with OSHA guidelines.

- For more information on OSHA on-site consultations or PEOSH consultations, visit [here](#).
- To request an OSHA on-site consultation, visit [here](#) to download a request form.
- Email completed forms to njonsite@dol.nj.gov. If you have any questions, email njonsite@dol.nj.gov or call (609) 292-0404.
- To request a PEOSH consultation, visit [here](#). Questions? Email safetytraining@dol.nj.gov or call (609) 633-2587.





What is an “establishment”?

One or more facilities within New Jersey. An establishment is a single physical location where business is conducted or where services or industrial operations are performed. For work activities not performed at a single physical location (such as construction; transportation; communications, electric, gas and sanitary services; and similar operations), the “establishment” is represented by main or branch offices, terminals, stations, etc., that either supervise such activities or are the base from which personnel carry out these activities. (29 CFR 1904.46)

PLEASE NOTE:

You will not be eligible to participate in this year’s award program if a fatality occurred at your establishment in the last five years, a fatality occurred corporate wide in the last twelve months, or if your worksite had a DART or TRC rate above 50% of the industry average most recently published by the Bureau of Labor Statistics.

To review industry averages by NAICS code, visit [here](#). If your company’s six-digit NAICS code is not specifically indicated in the table, the closest two-to-five-digit industry segment will be used for comparison.

For help calculating your DART and TRC rates visit the USDOL BLS Incidence Rate Calculator and Comparison Tool at <https://data.bls.gov/iirc>.

Application Process

Complete the full application. OSHA 300A Logs for calendar year 2022 must be included with application. Companies applying for the New Jersey Governor’s Award for Safety and Health Excellence based on ISO 45001 must include a copy of their current ISO 45001 Certificate. Companies can only apply for one award per establishment.

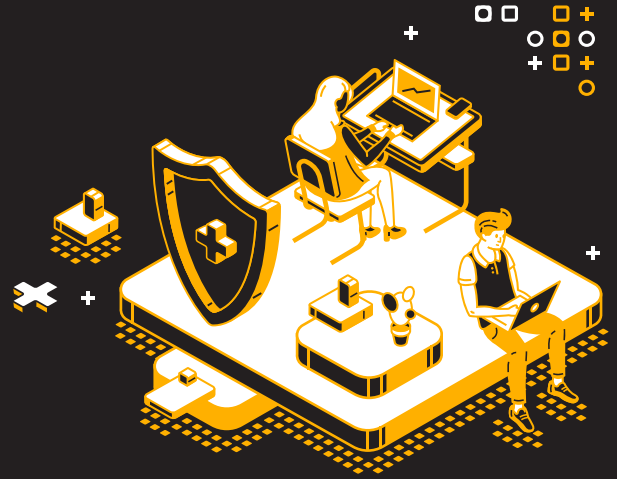
Only electronically submitted applications will be considered. Completed applications must be emailed to njonsite@dol.nj.gov by July 15, 2023.



New Jersey Governor's
Occupational Safety and Health Awards

APPLICATION

ALL APPLICANTS:



1. Company/Establishment Name:

2. Public or Private Sector: PUBLIC PRIVATE

3. North American Industrial Classification (NAICS) Code:

4. Facility Name:

5. Site Address:

STREET

CITY

ZIP CODE

COUNTY

5. Mailing Address:

(if different from site address)

STREET

CITY

ZIP CODE

COUNTY

6. Name of Contact Person:

(required)

7. Contact Person Details:

TITLE

EMAIL ADDRESS

PHONE NUMBER

SIGNATURE

New Jersey Governor's
Occupational Safety and Health Awards

APPLICATION

New Jersey Governor's Award for Safety and Health Excellence

(Complete only if applying for this award)

○+□□□+□+○+□□ □+○+□□□+□+



NOTE:

An establishment can only apply for one award (Excellence or Performance).
Please complete the applicable section for the award you wish to be considered for.
All applicants must complete the survey.



1. VPP, SHARP or ISO 45001:

2. Date of Issuance:

3. Expiration/Renewal Date:

4. DART Rate 2022:

5. TRC Rate 2022:

6. MOD Rate 2022:

7. Required Attachments:

- a. Current ISO 45001 Certificate (If applicable)
- b. OSHA 300A Form for 2022
- c. Documentation of Experience Modification Rate

New Jersey Governor's
Occupational Safety and Health Awards

APPLICATION

New Jersey Governor's Award for Safety and Health Performance

(Complete only if applying for this award)

○+□□□+□+○+□□ □+○+□□□+□+



NOTE:

An establishment can only apply for one award (Excellence or Performance).
Please complete the applicable section for the award you wish to be considered for.
All applicants must complete the survey.



1. Date(s) of Consultation:

2. Have all hazards identified during consultation been corrected?: YES NO

3. DART Rate 2022:

4. TRC Rate 2022:

5. Required Attachments:

- a. OSHA 300A Form for 2022

OSHA Safety and Health
Leading Indicators

SURVEY

Must be completed by all applicants



MANAGEMENT LEADERSHIP:

1. Describe safety and health goals and supporting objectives established for 2022.

2. How were these goals and the results shared with workers at the facility?

WORKER PARTICIPATION:

1. How are workers involved in the safety and health program at the facility?

2. Are there mechanisms to involve workers in hazard identification and prevention, or safety and health planning? Please describe.

SURVEY continued

Must be completed by all applicants



HAZARD IDENTIFICATION AND ASSESSMENT:

1. How are hazards identified by employees reported to management?

2. Are self-inspections for safety and health completed regularly? Is this information documented and how are hazards tracked to ensure correction?

HAZARD PREVENTION AND CONTROL:

1. Is preventative maintenance routinely performed to ensure that facilities and equipment are in good working condition? Please describe.

EDUCATION AND TRAINING:

1. What safety and health training was provided to employees in 2022?



SURVEY continued

Must be completed by all applicants



2. Do employees receive recurrent safety and health training on a routine basis? Please describe.

PROGRAM EVALUATION AND IMPROVEMENT:

1. When was the last time the facility's OSHA mandated programs were evaluated?
Please describe the process.